

Partnering With Existing Early Childhood Developmental Screening Initiatives



Early Childhood
Developmental
Health Systems

EVIDENCE TO
IMPACT CENTER

July 11, 2024

Today's Presenters



Rebecca Hernandez, MEd
Manager, Help Me Grow
Orange County



Barb Tengesdal, PhD
Director, First 5 Fox Valley and
Help Me Grow Wisconsin



Jennifer Koop, PhD, ABPP
Medical Director, Pediatric
Neuropsychology at Children's
Wisconsin



Melissa Passarelli, MA
Associate Director of
Implementation & System
Building, Help Me Grow
National Center





Housekeeping

- Attendees are muted for the duration of the event.
- Use the chat to introduce yourself, chime in, and ask questions! You can also submit questions through the Q&A feature.
- Today's slides are available under the Handouts tab on the eLearn event page.
- A recording will be available within 48 hours.
- CEUs are provided for this webinar (more details on how to receive credits will be shared at the end of the presentation).



About the Early Childhood Developmental Health Systems (ECDHS): Evidence to Impact Center

- We support states and communities to build early childhood systems that improve the health and well-being of young children and their families
- Our objectives:
 - Strengthen the evidence base of state ECD systems
 - Accelerate ECD systems development
 - Increase systems-building skills and the number of early childhood and health system leaders
 - Advance the delivery of high-quality ECD promotion and support services in pediatric settings
- Learn more about our mission and structure at earlychildhoodimpact.org/about-us/



Funding Acknowledgment

This program was made possible through the support of the Health Resources and Services Administration (HRSA) of the U.S. Department of Health and Human Services (HHS) as part of an award totaling \$5,300,000 with 0% financed from non-governmental sources. The contents are those of the authors and do not necessarily represent the official views of, nor an endorsement by, HRSA, HHS, or the U.S. Government. For more information, please visit [HRSA.gov](https://www.hrsa.gov).



Partnering With Existing Early Childhood Developmental Screening Initiatives



Early Childhood
Developmental
Health Systems

EVIDENCE TO
IMPACT CENTER

July 11, 2024

Community-Based Screening Initiatives



Early Childhood
Developmental
Health Systems

EVIDENCE TO
IMPACT CENTER





Why partner with screening initiatives?

- Families exist in multiple spaces!
- Screening is happening in multiple places!
- Screening is not yet happening universally or equitably
- Aligning efforts can:
 - Streamline the experience for families
 - Minimize duplication
 - Ensure that different aspects of the early childhood system act as a “team” to support families
 - Allow for universal messaging on developmental promotion
 - Right-size capacity
 - Minimize costs





How does screening occur?

- Conducted with a provider:
 - In-person, on paper
 - In-person, on a computer
 - Over the phone
- Parent-completed:
 - On paper
 - Online
 - Over the phone





Initiatives/Settings Where Screening Occurs

- Health care practices
 - Well-child visits
 - Healthy Steps
- Early care and education
 - Early Head Start/Head Start
 - Child care providers
- Home visiting programs
- Child Find (IDEA Part B/C)
- Help Me Grow
 - Centralized Access Point
 - Partnerships with other child-serving providers
 - Screening events (Books, Balls, and Blocks)





How do I partner?

- Identify existing local programs/initiatives that offer screening!
 - Child care providers: Identify your local [Child Care Resource and Referral Agency](#). CCR&Rs are tasked with supporting child care providers in their catchment, and may know who is screening.
 - Child Find (IDEA Part B/C): Reach out to your [county/state administrator](#) to learn more about their Child Find practices.
 - [Early Head Start/Head Start](#)
 - [HealthySteps](#)
 - [Help Me Grow](#)
 - [Home visiting programs](#)
 - [Title V](#): Check if your state has prioritized developmental screening as a performance measure and, if so, their action plan.
- Identify the best opportunities to partner:
 - Share screening results
 - Leverage existing screening platforms
 - “Outsource” referral and linkage



OC Children's Screening Registry: A Solution for Cross-Sector Partnership and Communication

July 11, 2024

Rebecca Hernandez
Help Me Grow Orange County, CA



Early Childhood
Developmental
Health Systems

EVIDENCE TO
IMPACT CENTER



Help Me Grow
ORANGE COUNTY

The **Help Me Grow Orange County** system is designed to ensure we identify vulnerable families and children, link them to community-based services, and empower families to support their children’s healthy development through the implementation of four core components:

Centralized Access Point
(Call Center)

Family and
Community Outreach

Health Care Provider
Outreach

Data Collection and
Analysis

By calling the toll-free number **1.866.GROW.025** (1.866.476.9025) or using our online link, expectant parents, caregivers, early care providers and health care providers can connect prenatal families and families with young children to services.

Contact Help Me Grow if:

- Expectant family would benefit from prenatal support services.
- Parent has concerns or questions about their child’s development, behavior, or learning.
- Child’s developmental screening indicates further assessments or resources are needed.
- Parent needs help navigating the early childhood services system in Orange County.
- Child is not eligible for Regional Center or school district services.
- Child is eligible for Part B/C and needs additional supports or services.

Visit our website for more information at www.helpmegrowoc.org.



Establishing the OC Children’s Screening Registry

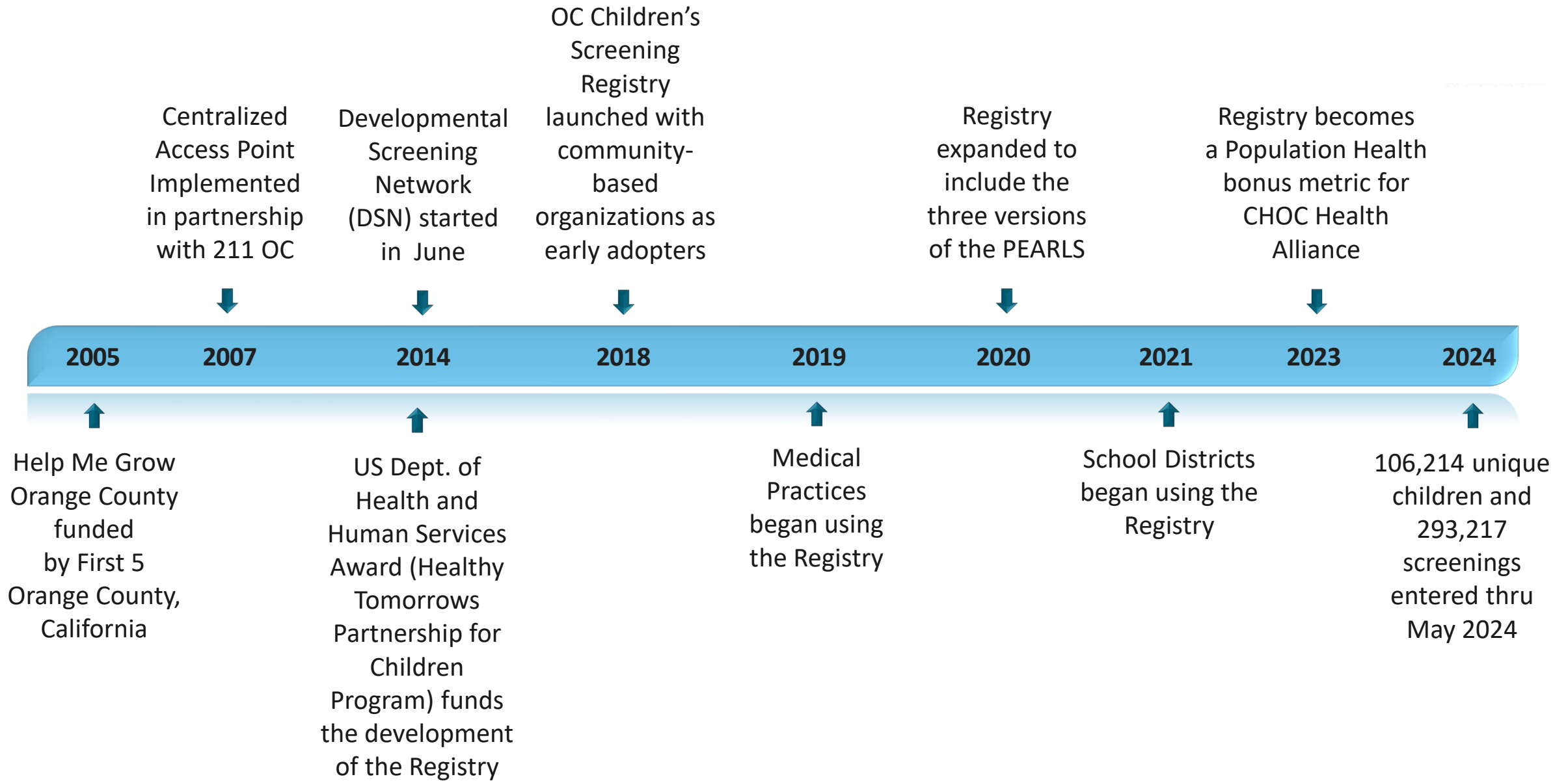
- In 2014 Help Me Grow Orange County received a Healthy Tomorrows Partnership for Children’s Program Award to support a Developmental Screening Network and to create a screening registry.



Vision: “Collaborative partners ensure all Orange County young children receive developmental screenings with evidence-based tools and identified concerns are addressed.”

- The OC Children’s Screening Registry is a free online database for primary health care and community-based providers to view and enter developmental, behavioral, and trauma screening data.





Overview of the OC Children's Screening Registry

- The intent is to communicate screening results between organizations and health care providers
- Includes five screening tools:
 1. Ages & Stages Questionnaires – Third Edition (ASQ-3)
 2. ASQ: Social Emotional, Second Edition (ASQ: SE-2)
 3. Parents Evaluation of Developmental Status (PEDS)
 4. Modified Checklist for Autism in Toddlers – Revised (M-CHAT-R/F)
 5. Pediatric ACEs Screening and Related Life-events Screener (PEARLS)
 - Child (0-11) Parent/Caregiver Report
 - Teen (12 and up) Parent/Caregiver Report
 - Teen (12 and up) Self Report
- Administered by Help Me Grow Orange County/Children's Hospital of Orange County, CA





Benefits: Better Communication and Better Outcomes

- Fast, easy, free access to a child's screening history
- Online data platform for aggregate and child level reporting
- Track screenings with robust reporting capacity
- Share HIPAA compliant screening results with other providers
- Avoid duplicate screenings
- Seamlessly connect families to Help Me Grow to obtain services for children identified with developmental problems
- View referrals and outcomes





Partnering With Early Childhood Screening Efforts

- **Community Based Organizations**

- Initial Registry users were DSN participants
- Expanded to include organizations supporting the homeless and others

- **Child Health Care Providers**

- Health care provider engagement with CHOC Quality Improvement Advisors
- In January 2023, CHOC Health Alliance (CalOptima Network) added Population Health domain bonus metrics
- Upcoming: Developmental screening as HEDIS Metric

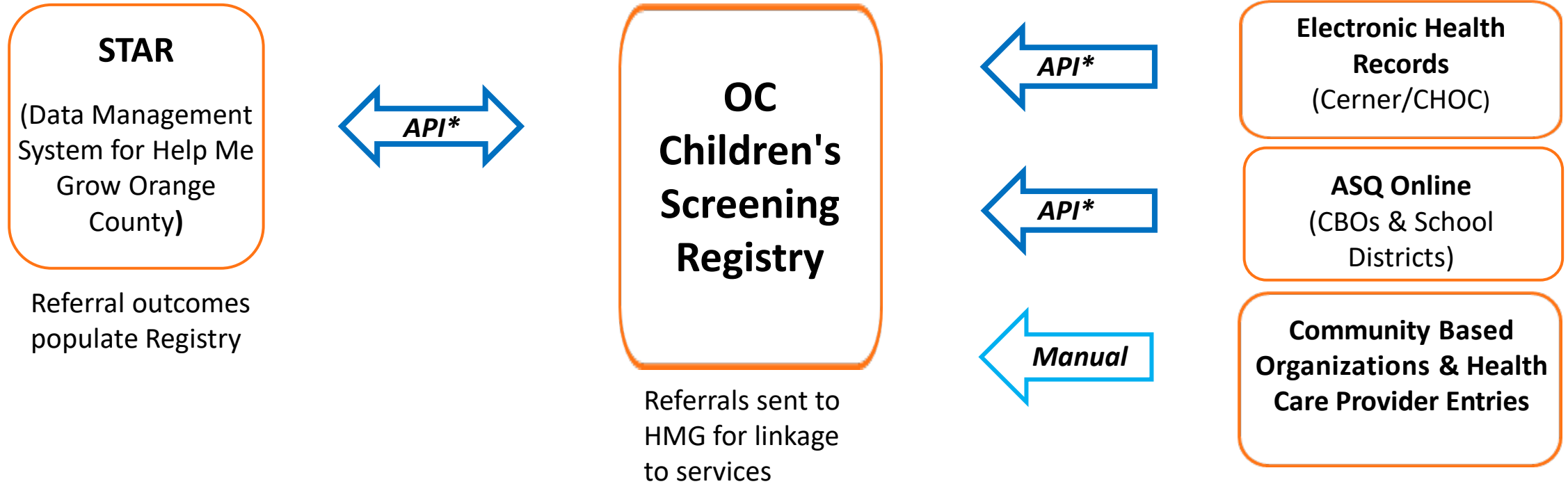
- **School Districts**

First 5 OC funded:

- Development of the API between the Registry and ASQ Online
- API start up costs for the school districts
- School district scope of work with First 5 includes use of the Registry

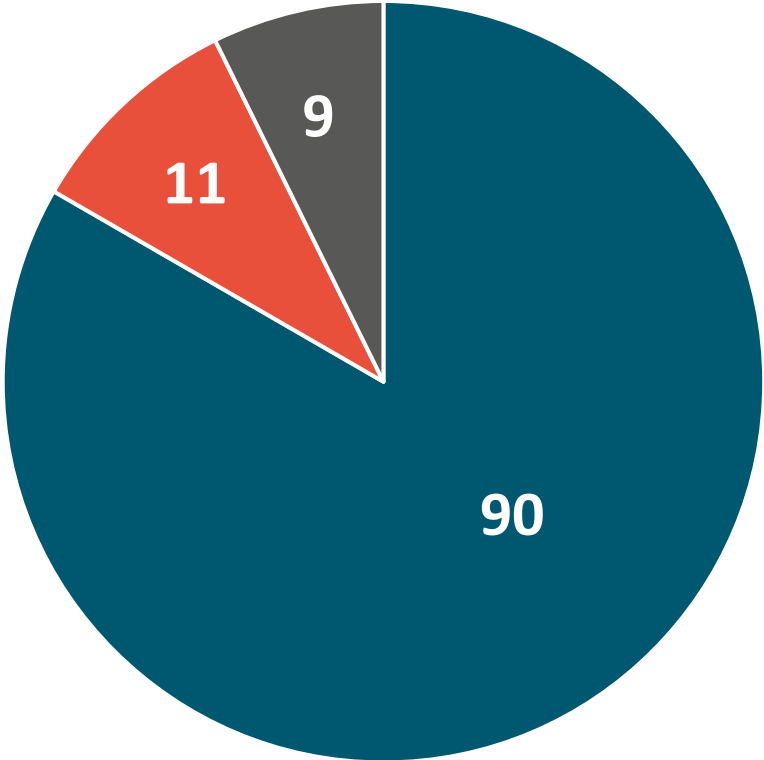


Linked Technology for Data Transfer



** Application Programming Interface (API) allows data to be transferred between data platforms*

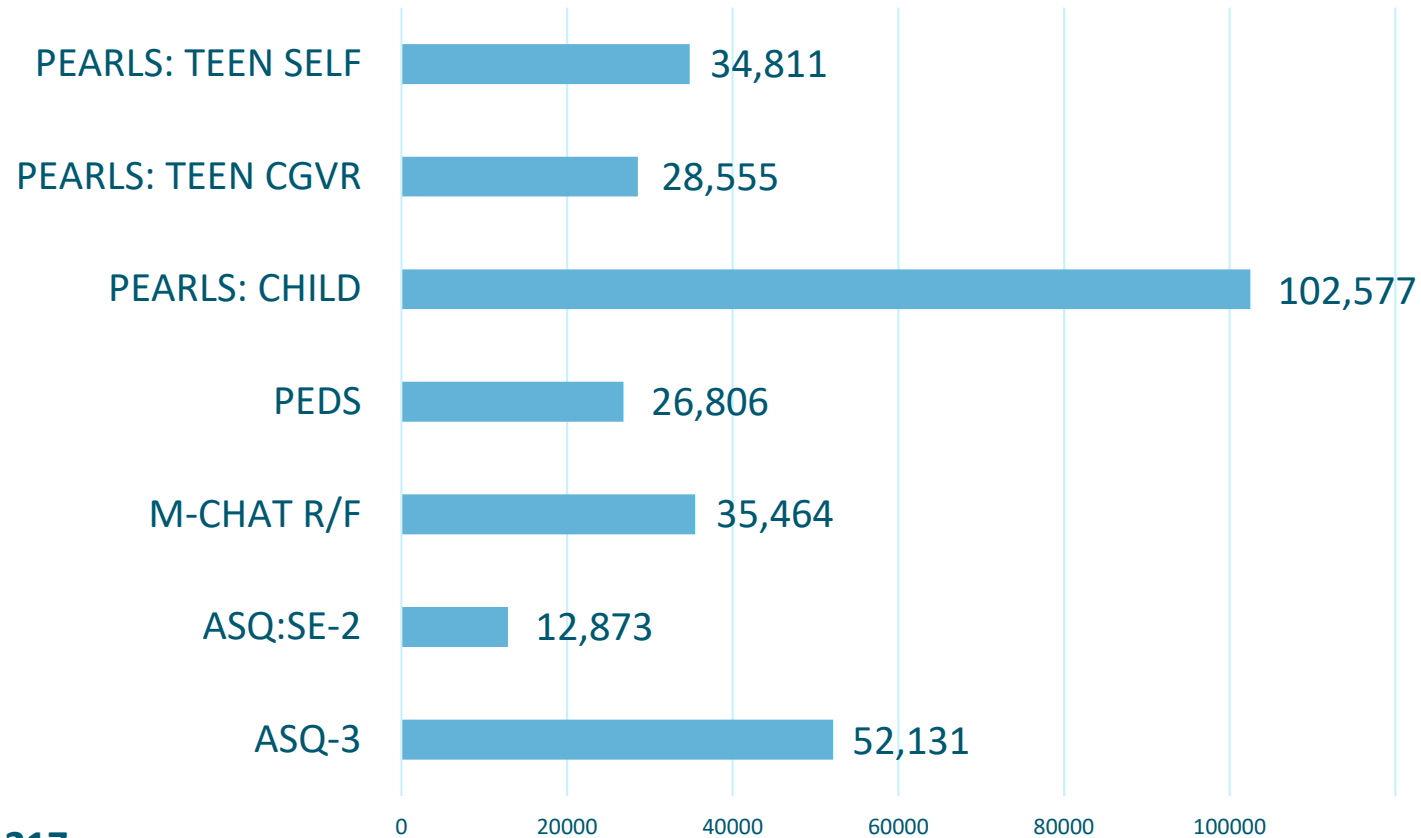
OC Children's Screening Users through May 2024



■ Medical Practices ■ Community Based Orgs. ■ School Districts



Total Unique Children and Total Screenings by Tool January 2018 thru May 2024



Total Screenings = 293,217

Total Unique Children = 106,214

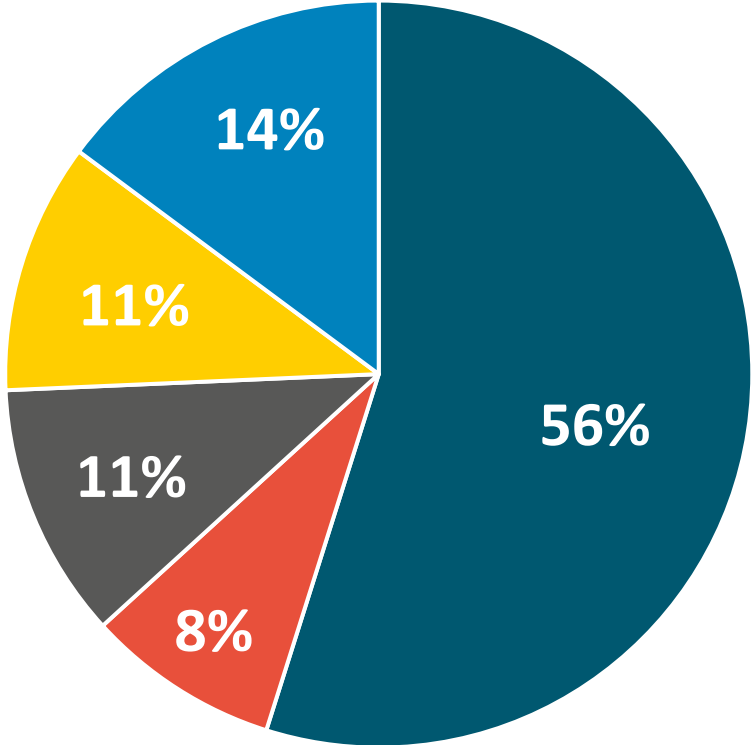


Early Childhood
Developmental
Health Systems

EVIDENCE TO
IMPACT CENTER



Connecting to Services: Referrals to Help Me Grow



Total Referrals = 4,099
January 2018 thru May 2024

■ ASQ-3 ■ ASQ:SE-2 ■ MCHAT-R/F ■ PEDS ■ PEARLS





Future Opportunities With the Registry

Help Me Grow and Children's Hospital of Orange County (CHOC) have developed licensing agreements to allow others to utilize a separate version of this Registry in their jurisdiction

- Three necessary agreements for use of the Registry:
 - CHOC and Registry vendor have a software license agreement to allow the vendor to provide access and customizations for other entities (Licensee)
 - End User License Agreement between CHOC and Licensee*
 - Registry vendor will contract separately with the Licensee to provide hosting and customizations

*Must be in place prior to agreement between vendor and Licensee



Thank You

Rebecca Hernandez

Help Me Grow Orange County, CA

Rehernandez@choc.org

www.helpmegrowoc.org



Early Childhood
Developmental
Health Systems

EVIDENCE TO
IMPACT CENTER



Help Me Grow
ORANGE COUNTY

Growing Rural Health Equity With Help Me Grow

The Community Partnership Model

Barb Tengesdal, PhD – Executive Director First 5 Fox Valley and Help Me Grow Wisconsin

Jennifer Koop, PhD, ABPP – Medical Director, Pediatric Neuropsychology at Children’s Wisconsin



Early Childhood
Developmental
Health Systems

EVIDENCE TO
IMPACT CENTER

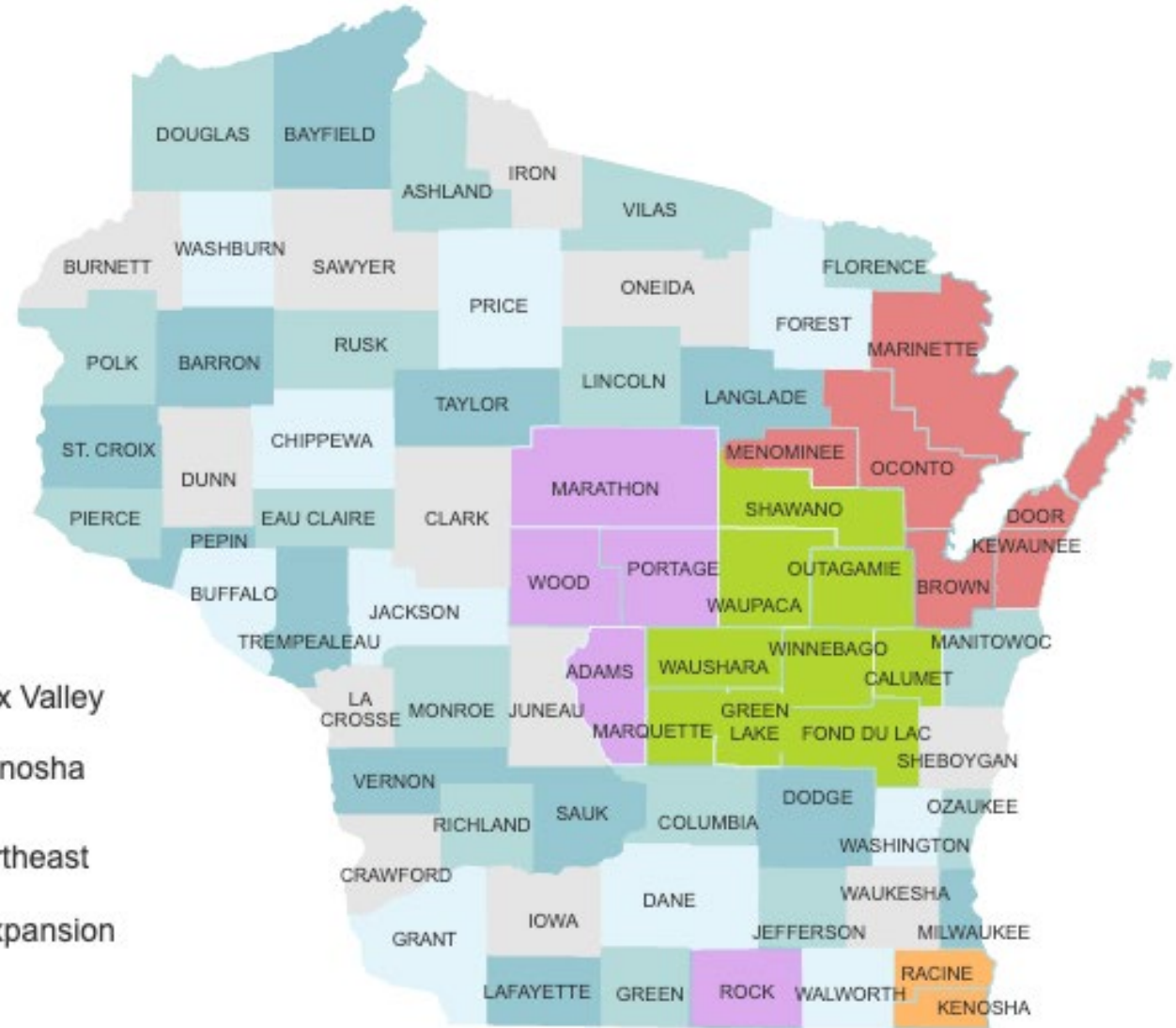
July 11, 2024





Help Me Grow

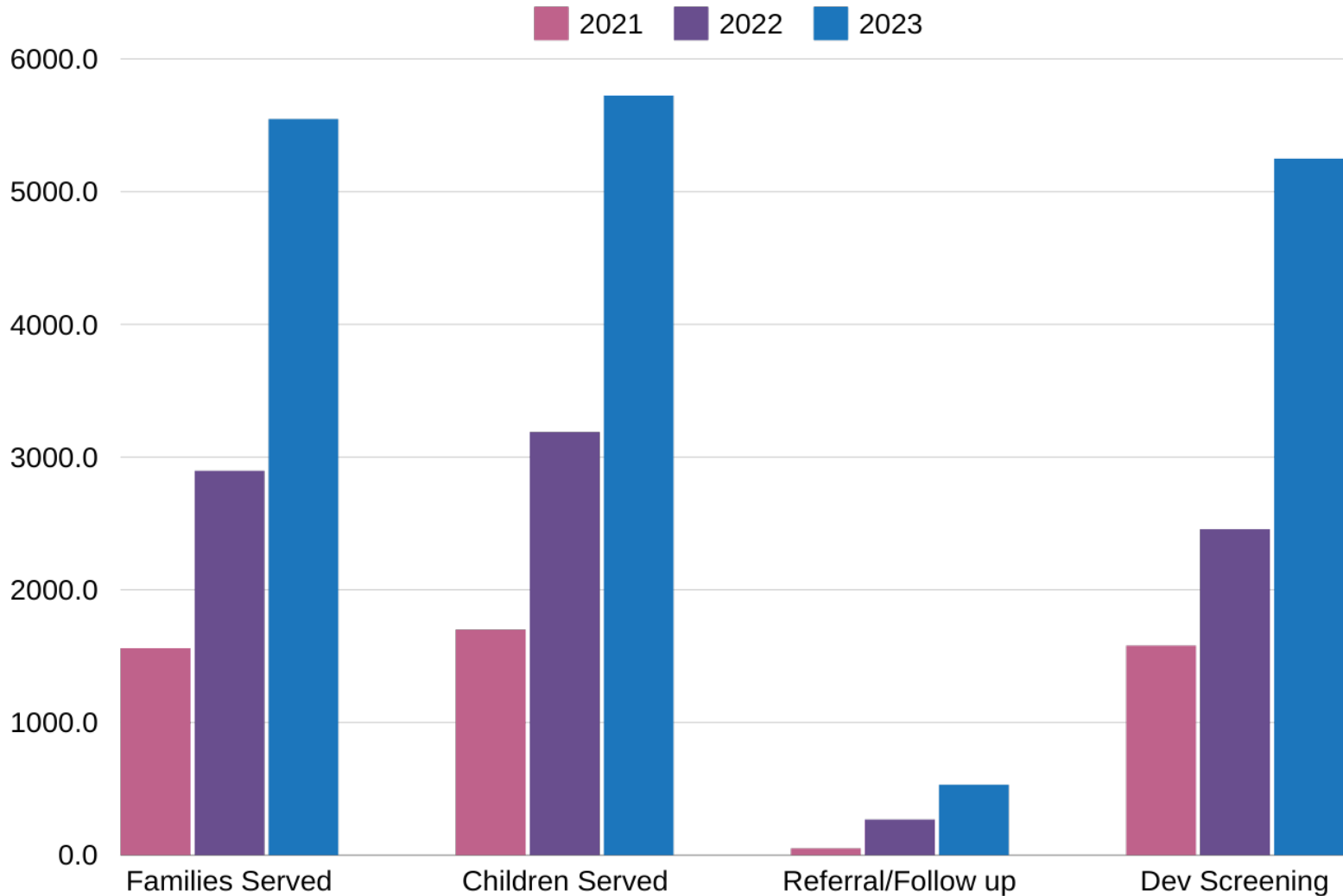
WISCONSIN



-  HMG- Fox Valley
-  HMG- Kenosha
-  HMG-Northeast
-  Future Expansion



Outcome and Impact Doubling Each Year



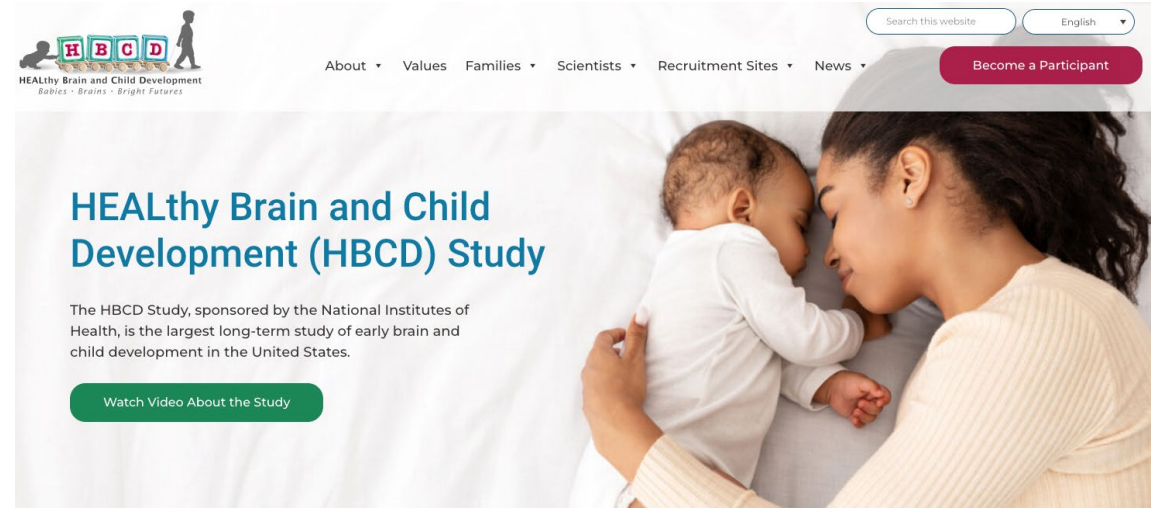
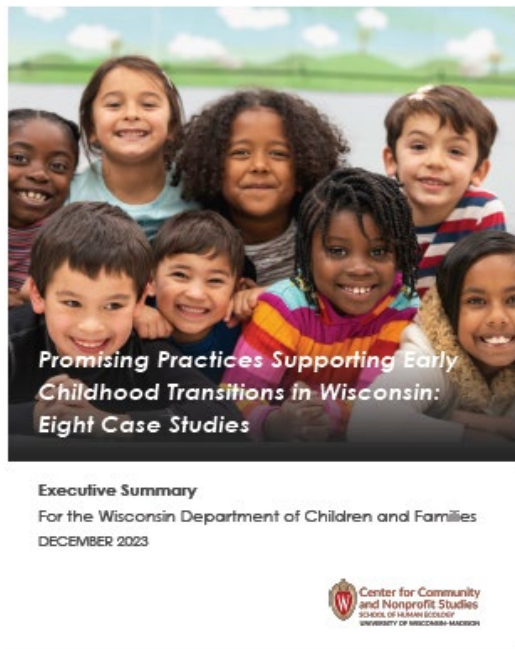
Help Me Grow Wisconsin 2023 Fidelity Report

	2023	2022	2021
Families Served	5,550	2,899	1,561
Children Served	5,725	3,189	1,700
Total Children 0-3	2,446	2,349	1,390
Information Only	6,676	2,733	1,366
Referrals Made	727	764	106
Referrals/Follow-up	534	270	53
Total CAP Activities	76,980	37,468	2125
Needs Met Avg	98%	95%	N/A
Linkage Avg	85%	86%	N/A
Developmental Screens	5,251	2,459	N/A



Promising Practices

Advisory committee NIH longitudinal study-Healthy Brain and Child Development (HBCD) Study



Promising Practices Case Study

- Identified as a successful example of supporting children and families across multiple systems in Wisconsin’s Department of Children and Families PDG study on Promising Practices Supporting Early Childhood Transitions in Wisconsin: Eight Case Studies. Center for Community and Nonprofit Studies - University of Wisconsin 2023
 - [Read the case studies here](#)
 - [Supplementary document](#)





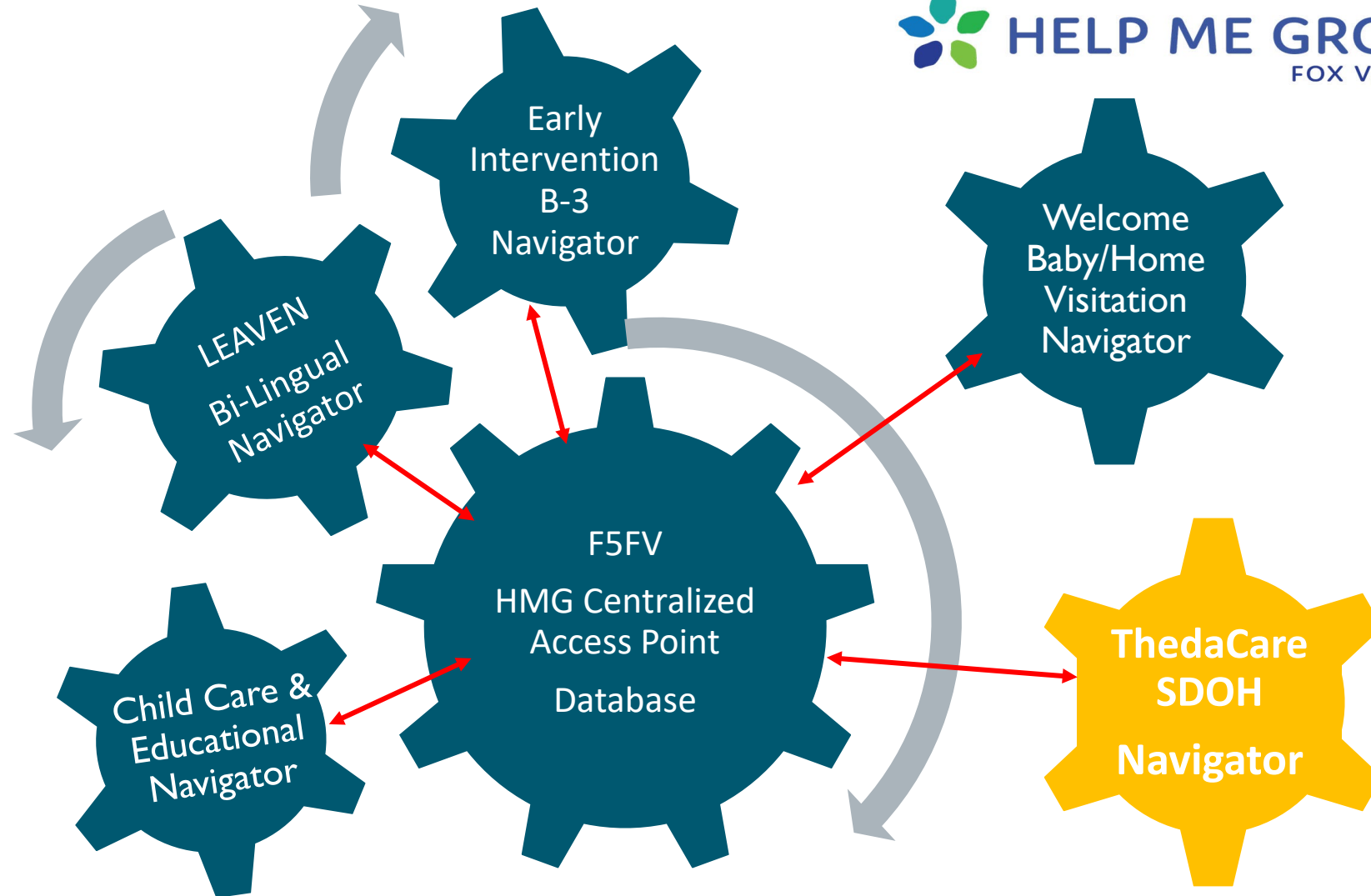
2023 Help Me Grow Wisconsin Highlights

Grant Funded Projects:

- **Child Abuse & Neglect Prevention Board** – Child Care expansion using ASQ Developmental Screening with HMG
- **Advancing Healthier Wisconsin Endowment Maternal & Child Health Grant** – Continuation of Rural Health Initiative & Targeted populations – Catalpa Behavioral Health and People of Progression (exploring use of Doula work as a pathway into the HMG system)
- **Advancing Healthier Wisconsin Endowment Community Innovation Grant** – Growing Rural Health Equity with the HMG Model – inserting HMG navigator directly into a health system.
- **Basic Needs Giving Partnership Community Foundation Grant** – Welcome Baby & Developmental Screening Project
- **ThedaCare Community Health** – HMG Community Navigators in Early Intervention/Birth to Three & Welcome Baby programs.
- **ThedaCare Community Health Action Team** – Mapping Protective Factors: Social Emotional Competence in Children



Local Community Partnership System Model



Navigators in local Early Childhood Programs - meeting families where they are.



Early Childhood Developmental Health Systems

EVIDENCE TO IMPACT CENTER

HMG Navigator Collaborative Work

- Agreements between agencies to place experienced staff as the HMG navigator (MOU)
- 10-20 hours identified for HMG navigator work
- HMG Navigators access the database, assigning referrals and follow up as recommended.
- Navigators work as an interagency team meeting weekly/bi-monthly to monitor and discuss referrals
- Referral instead of case management
- Community data shared through ASQ Enterprise & Centralized Access Point Hub
- Navigators are experienced and specialists in early childhood knowledge
- Navigators fill gaps between services, not supplant existing systems or programs



Help Me Grow Database: Family Follow-Up

Help Me Grow 4.0 Family Database (Wisconsin Version) Database Support Logged In: BarbT

Family Demographics Region: [v] Status: [v] Start Date: [From] [To] Filter Clear Advanced Search Export Print Counts

* - Click on the Count for details.
Active Filters:

Number of Families*	Count	Pct%
Active	4055	75.92
Inactive	1113	20.84
Open Inquiry	172	3.22
Uncoded	1	0.02
Totals	5341	100

Call Reason*	Count	Pct%
Adaptive	1	0.02
Autism Spectrum	14	0.26
Basic Need	26	0.49
Behavioral	21	0.39
Child Care	10	0.19
Children's Supply Needs (diapers, clothing, etc)	3	0.06
Cognitive (Learning)	3	0.06
Communication	923	11.66
Community Resources	26	0.49
Developmental Screening	2596	48.61
Down Syndrome	1	0.02
Education	88	1.65
Family Issues - Domestic Violence, Incarceration	2	0.04
Fine Motor	8	0.15
First Newborn	1108	20.75
General Development	90	1.69
Gross Motor	149	2.79
Health Insurance	2	0.04
Health/Medical	32	0.6
Hearing	7	0.13
Homeless	5	0.09
Housing	1	0.02
Infant/Child Feeding	25	0.47
Mental Health	1	0.02
No Concern	22	0.41
Other	12	0.22
Personal Social	2	0.04
Playgroup/Sprouts	30	0.56
Prematurity	20	0.37
Prenatal	4	0.07

How Heard Category*	Count	Pct%
CAP Services	6	0.11
Child Care Provider	1359	25.44
Children's Wisconsin	12	0.22
Community Agency	12	0.22
Early Intervention/Birth to 3	1155	21.63
Early/Head Start	442	8.28
Family Services	1423	26.64
FFV	43	0.81
Health Care Provider/Physician	43	0.81
Home Visitation Program	40	0.75
LEAVEN	50	0.94
Parent Connection	1	0.02
Playgroup/ SPROUTS	30	0.56
Protective Services	1	0.02
Public Health Department	13	0.24
School District	455	8.52
ThedaCare	38	0.71
Unknown	11	0.21
Word of Mouth	23	0.43
Uncoded	184	3.45
Totals	5341	100

Recurring Families	Count	Pct%
Recurring	145	2.71
Totals	5341	100

Who Called *	Count	Pct%
Child Care Provider	21	0.39
Community Agency	2	0.13
DCFS/Child Welfare/Social Worker	4	0.07
Early Head Start Staff	49	0.92
Early Intervention	74	1.39
Extended Family	8	0.15
Family Services/Parent Connection	49	0.92
Foster Parent	19	0.36
Head Start Staff	78	1.46
Health Dept	2	0.04
LEAVEN	4	0.07
Medical Provider	40	0.75
Mental Health Provider	1	0.02
Other	31	0.58
Parent/Guardian	4779	89.48
School District Staff	3	0.06
Uncoded	172	3.22
Totals	5341	100

Point Of Entry*	Count	Pct%
ASQ Online	405	7.58
ASQ Paper	43	0.81
Basic Needs	44	0.82
Child Care Electronic or Paper ASQ	1345	25.18
Early Head Start	25	0.47
Early Intervention/Birth to 3 ASQ	933	17.47
Early Intervention/Birth to 3 referral but no ASQ	261	4.89
Family Services/Parent Connection	59	1.1

Race *	Count	Pct%
Totals	5341	100



Help Me Grow Database: Data Collection

Help Me Grow 4.0 Family Database (Wisconsin Version)

Database Support Logged In: BarbT

- Home
- Family Follow-up
- Families
- Organization Follow-up
- Organizations
- Volunteers
- Reports
- Counts
- Settings
- Log Out

Developmental Screenings

Region Status Start Date End Date Filter Clear Advanced Search Export Print Counts

* - Click on the Count for details.
Active Filters:

Number of ASQ Screenings*	Count	Pct%
ASQ-3 No Concern	2935	52.66
ASQ-3 Monitor	1297	23.27
ASQ-3 Concern	1309	23.48
ASQ-3 Uncoded	33	0.59
ASQ-3 Totals	5574	100

Number of ASQ-SE Screenings*	Count	Pct%
ASQ:SE No Concern	1678	77.22
ASQ:SE Monitor	191	8.79
ASQ:SE Concern	302	13.9
ASQ:SE Uncoded	2	0.09
ASQ:SE Totals	2173	100

Number of M-CHAT Screenings	Count	Pct%

ASQ-3 Interval	Count	Pct%
02 months	102	1.83
04 months	185	3.32
06 months	227	4.07
08 months	148	2.66
09 months	178	3.19
10 months	97	1.74
12 months	298	5.35
14 months	129	2.31
16 months	239	4.29
18 months	309	5.54
20 months	209	3.75
22 months	169	3.03
24 months	397	7.12
27 months	279	5.01
30 months	365	6.55
33 months	262	4.7
36 months	477	8.56
42 months	566	10.15
48 months	472	8.47
54 months	290	5.2
60 months	175	3.14
Uncoded	1	0.02
Totals	5574	100

M-CHAT Interval	Count	Pct%

ASQ SE Interval	Count	Pct%
02 months	46	2.12
06 months	221	10.17
12 months	223	10.26
18 months	227	10.45
20 months	1	0.05
24 months	221	10.17
30 months	226	10.4
36 months	324	14.91
48 months	455	20.94
60 months	229	10.54
Totals	2173	100

ASQ-SE Screening Frequency (by Child)	Count	Pct%
1 ASQ	1254	77.79
2 ASQs	215	13.34
3-4 ASQs	133	8.25
5+ ASQs	10	0.62
Totals	1612	100

ASQ Screening Frequency (by Child)	Count	Pct%
1 ASQ	2844	73.93
2 ASQs	586	15.23
3-4 ASQs	341	8.86
5+ ASQs	76	1.98
Totals	3847	100

ASQ-3 Domains	No Concern	Monitor	Concern
Communication	4269	670	625
Fine Motor	4337	723	503
Gross Motor	4570	512	480
Problem Solving	4554	562	446



Early Childhood
Developmental
Health Systems

EVIDENCE TO
IMPACT CENTER



Help Me Grow
WISCONSIN

Growing Rural Health Equity With the HMG Model

Research Grant:

- Medical College of Wisconsin
- First 5 Fox Valley/Help Me Grow Wisconsin
- ThedaCare Rural Health system



Early Childhood
Developmental
Health Systems

EVIDENCE TO
IMPACT CENTER



AW ADVANCING A HEALTHIER
WISCONSIN ENDOWMENT

What impact would be realized if an HMG Navigator was placed directly in a Health System?

- Reduce health disparities
- Address barriers of geography & limited resources
- Identify delays earlier
- Follow up with resources - family & provider benefits!

Culminating in an increase in community health & well-being for the entire family





Objectives of the grant

1. Build *efficient, effective, and equitable* **early childhood systems**
2. **Early Identification** of developmental delays addressing disparities that impact a child's quality of life
3. **Strengthen referral relationships** and processes so that patients are better connected to the resources they need with a **warm handoff** and strong community relationships
4. **Data** to understand community health and well being of children 0-5 years- using ASQ Screening Tools
5. Create a **bridge(warm handoff) to community resources** and **follow up** with families while maximizing the EPIC electronic medical record (EMR) for linkages to resources outside the health care system.

*life*inspired.



Inside/Outside Approach

Inside Health Care

- HMG Navigator sits within ThedaCare Health System to **link patients/families to resources** for Early Childhood
- Primary Care Physicians (PCP) can **refer** internally to the HMG Navigator through EPIC
- PCP can **utilize screeners** (i.e.SDOH, ASQ) to determine if a referral to a HMG Navigator would be beneficial
- HMG Navigator sitting within the SDOH team providing **referral, follow up** and **warm hand off** to community partners and notes family follow-up within EPIC and the HMG database.

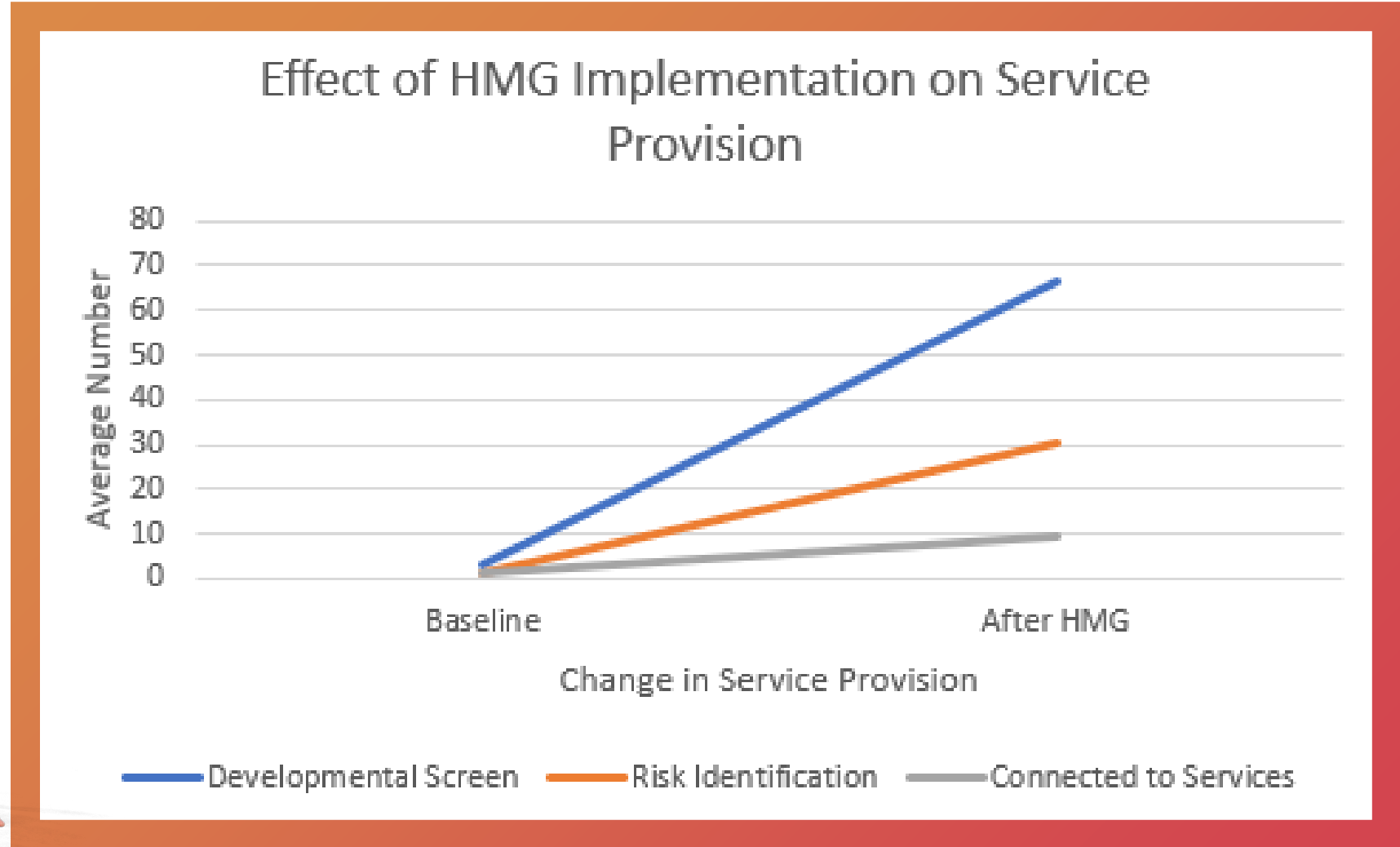
Outside Health Care

- A Rural Help Me Grow Community Partner **Navigator** works alongside the ThedaCare Community Healthcare Navigator to follow up and support families with a broad range of early childhood resources.
- **Data** to tell the story
- Support the Principal Investigator to answer **research** questions
- Seek sustainability **funding**



Findings

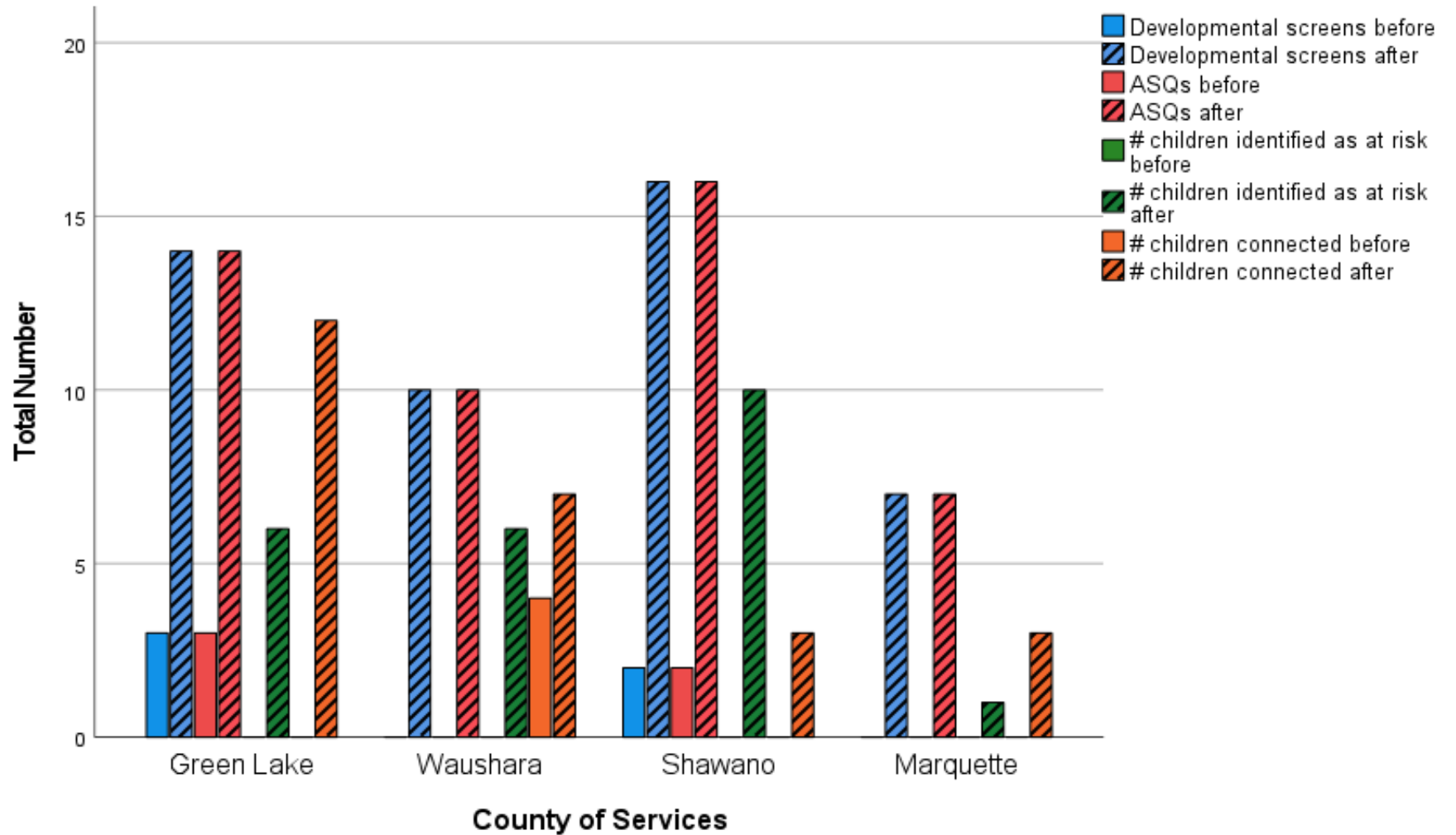
Significant increases in all relevant child access metrics over the course of the 18-month study period.



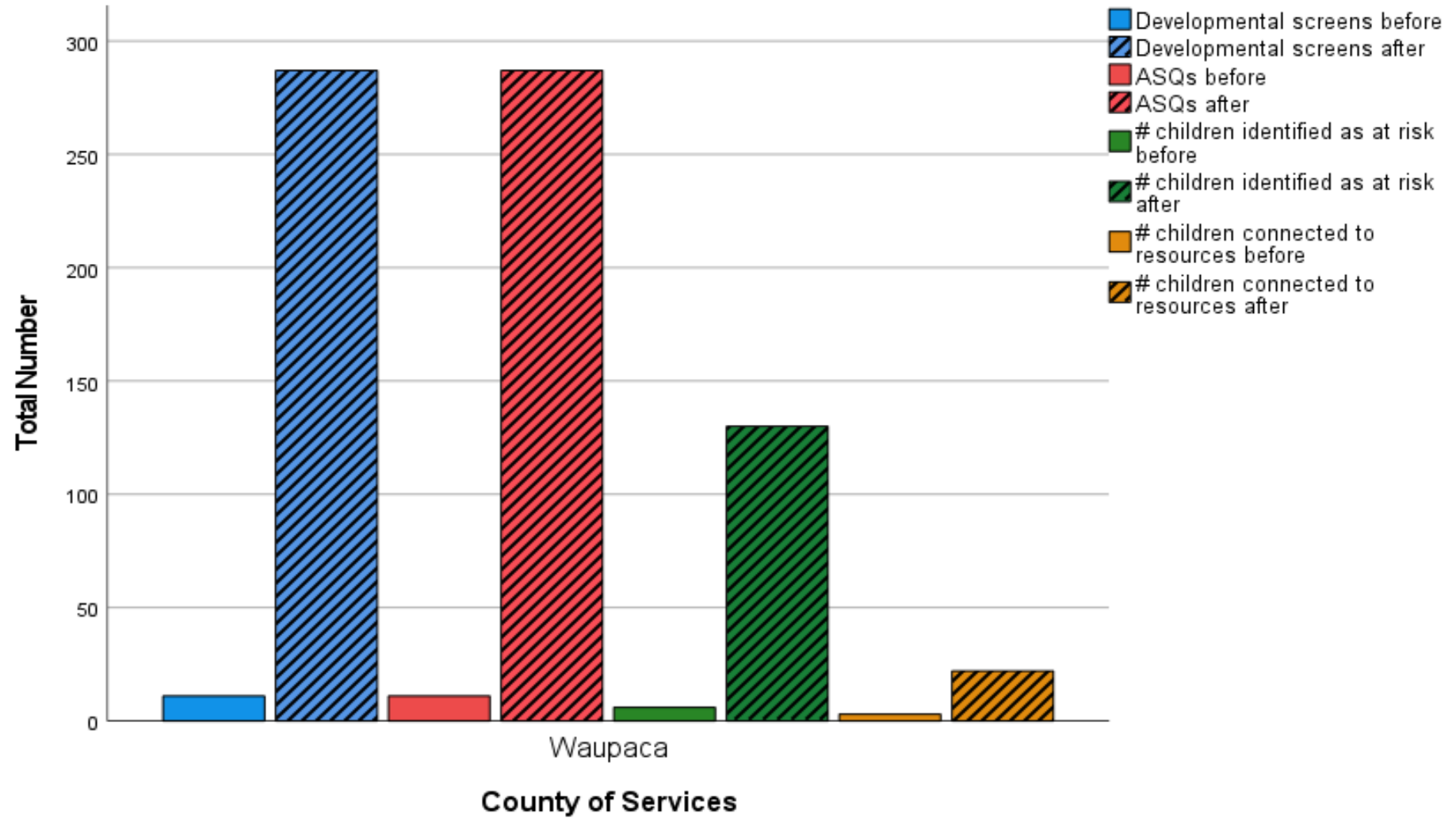
Findings

Change in screenings, risk identification and connection to services by county.

Note: Although there were differing rates of improvement across counties, each county demonstrated an increase in the number of children screen and connected to services.



Findings



2023 Help Me Grow AHW Research Grant

Findings and Recommendations from the Study

- Key Findings:
 - Public Health Model vs. HMG Navigator Support: Expanding developmental screening throughout Wisconsin through a public health model without the follow-up support of a Help Me Grow navigator does not significantly impact third-grade reading scores. Help Me Grow provides early identification and referral with ongoing family support, leading to long-lasting and impactful community change.
 - Sustainability and Cost-Effectiveness: The model of sustainability is established, with Help Me Grow offering an inexpensive way to support universal screening goals. The navigator model allows local partners to adjust hours and staff time according to the needs of dwindling rural populations.
 - Long-Term Funding Needs: Funding is needed for a 3-5 year project to track children who have started with Help Me Grow, with regular developmental screening and support, to assess changes in educational preparedness and outcomes.
- **From ThedaCare's Healthcare Perspective:**
 - Significant Increase in Developmental Screenings: The most important accomplishment was the significant increase in children referred to the Help Me Grow program and undergoing appropriate developmental screenings. The mean number of children screened per county increased from 3.2 to 66.8 over the project period.
 - Enhanced Resource Directory: Referrals were facilitated by the HMG program's resource directory, which grew from 199 identified resources at the beginning of the project to 336 resources across all 5 counties by the end of the project period.



HMG Wisconsin Leveraging the Data

Advocacy efforts and the success of Help Me Grow Community Partnership Model unlocked ARPA funds for Early Childhood Development Activities

City of Appleton \$1.5 million
Outagamie County \$2.8 million
Calumet County \$700,000
Waupaca County \$1.5 million
City of Appleton \$1.5 million
Winnebago County \$750,000

First 5 Fox Valley
Leveraged Funding 2020-2026
\$3,920,341

- 13 partner organizations receiving sub-grants
- 54 Child Care programs accessing ASQ Developmental Screenings- free
- 13 HMG PT Navigators
- 9409 ASQ Developmental Screenings 2023 year
- 4102 Active Families in Help Me Grow
- 5725 Children in Help Me Grow
- 718 Outgoing Referrals supporting families





Helping Families With Young Children Flourish

Improved Access

- Universal provision of comprehensive, personalized, whole-child, and family preventive and developmental services.

Real Engagement

- Families are engaged to access and ensure services are personalized to their own goals and use their lived expertise to help shape improvements in practice, policy, and the system of care.

Seamless Systems

- All early childhood systems intentionally collaborate to promote well-being, optimize early identification of concerns, and address social, health and relational goals and needs.

Note: Aligns with the [Engagement in Action \(EnAct!\) Framework](#).



Questions



How Did We Do?

- Please take a moment to complete a brief survey to support the Evidence to Impact Center in improving its trainings and technical assistance offerings and assessing program outcomes over time.
- The survey is anonymous, voluntary, and should take **no longer than 10 minutes** to complete.

To complete the survey, please click on the link in the chat or scan the QR code below on a mobile device.





CEUs

- Go to the “Contents” tab on the event page.
- Select “CEU Survey.”
- Enter the verification code provided at the end of the survey. (Code is case sensitive.)
- Complete the quiz.
- Once all items are completed the certificate will become available for download.
- You have 30 days to return to the event page and complete items for CEU credit.

Event page link: [https://elearn.zerotothree.org/p/ECDHS-EarlyChildhoodDevelopmentalScreeningInitiatives#tab-product tab contents 5](https://elearn.zerotothree.org/p/ECDHS-EarlyChildhoodDevelopmentalScreeningInitiatives#tab-product%20tab%20contents_5)



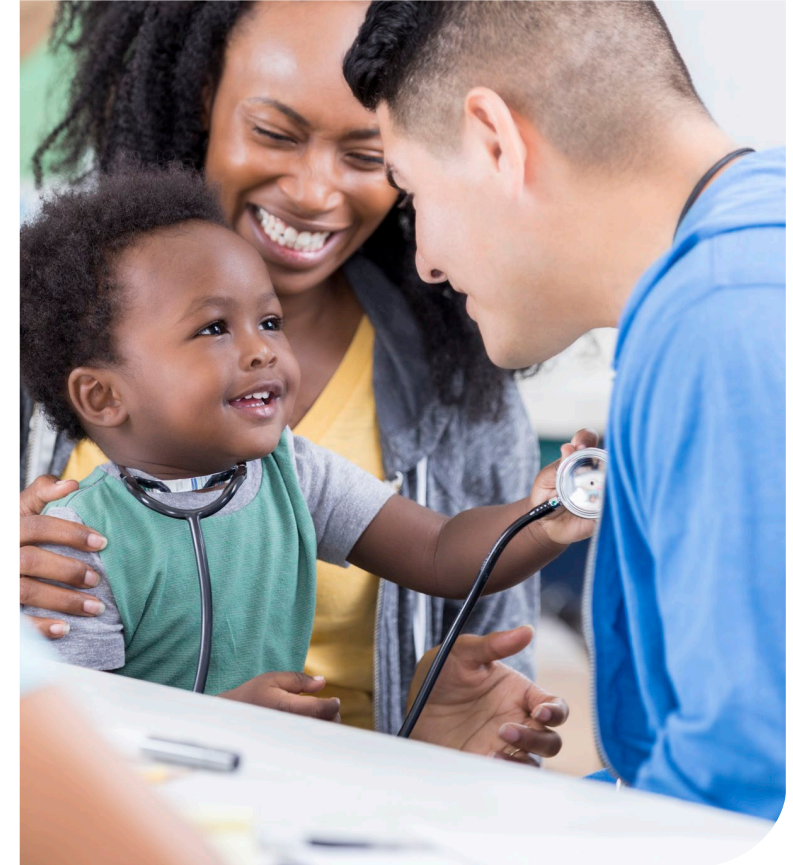
Upcoming Webinar on “Learn the Signs. Act Early.”

Thursday, August 8, 4-5:30 PM ET

- Learn about engaging families in early childhood development with resources and support from CDC’s “Learn the Signs. Act Early.” program.
- We encourage attendance for any clinician, staff member, administrator, or leader who supports young children and families.

Register today:

[https://elearn.zerotothree.org/p/ECDHS-CDCsLearntheSignsActEarly#tab-product tab overview](https://elearn.zerotothree.org/p/ECDHS-CDCsLearntheSignsActEarly#tab-product%20tab%20overview)



Early Childhood
Developmental
Health Systems

EVIDENCE TO
IMPACT CENTER

Learn the Signs.
Act Early.



Thank you again for joining us!

Please scan the QR code to complete our feedback survey.

Visit earlychildhoodimpact.org for more resources and information.

