



**LEADING WITH DIGNITY IN
TURBULENT TIMES**

Featuring:
Bela Mote, MEd
Sonja Crum Knight, PhD

With
Maria Ogunye, MPH
ZERO TO THREE

1

**ZERO TO
THREE
Membership**

Access valuable resources, learn from experts, connect with your colleagues, receive significant discounts, download the podcast and more, by becoming a ZERO TO THREE member.



zerotothree.org/membership

2




REGISTER NOW!

Early Bird pricing ends August 10!

ZERO TO THREE
Virtual Annual Conference 2021
October 25 - 29, 2021
zerotothree.org/takeheart




3



LEADING WITH
DIGNITY IN
TURBULENT TIMES

Carole Robertson Center for Learning
Zero to Three eLearn
July 28, 2021



4



WHO WE ARE



Bel Moté, M Ed
President and CEO



Sonja Cum Knight, PhD
Vice President, Programs & Impact

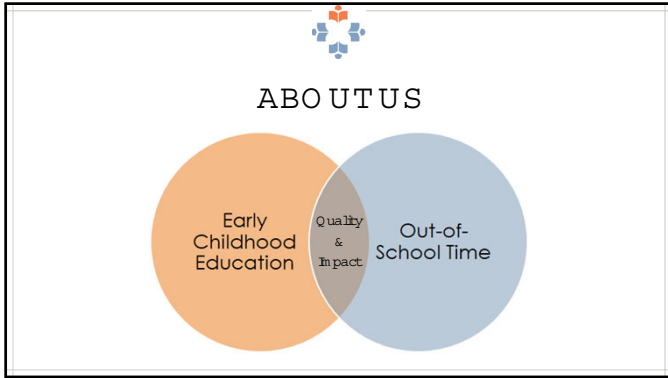
5



OUR HISTORY




6



7

ABOUT US

OUR MISSION
To educate, enrich, and empower children and families.

OUR VISION
To help build a just and equitable society, the Carol Robertson Center for Learning, in partnership with families, will be a beacon of best practices, innovation, and impact in early childhood and youth development.

8

CAROLE ROBERTSON CENTER for Learning *Our Core Values*

Commit to empower and support our staff.



Seek innovation, collaboration, and continuous improvement.

Work respectfully, transparently, and with integrity.

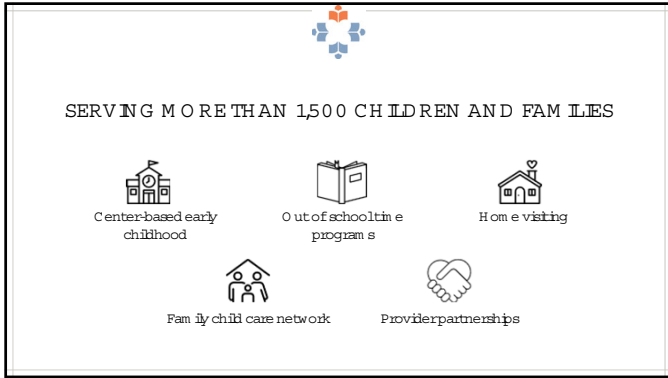
Listen with open minds and caring heart.

Take joy and pride in our work.

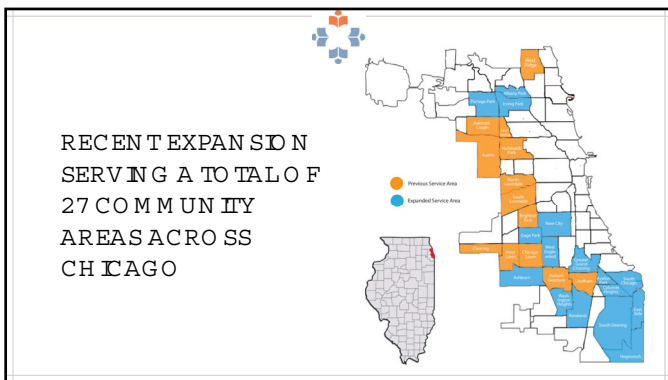
OUR CHILDREN AND FAMILIES COME FIRST. TO DO THIS, WE MUST:

9



10



11



12

"The servant-leader is servant first...It begins with the natural feeling that one wants to serve. Then conscious choice brings one to aspire to lead!"

- Robert Greenleaf (*The Servant as Leader*, 1970)

13



RESPONDING TO IMMEDIATE NEEDS

14

HONORING FAMILIES' EXPERIENCES



Weekly supply distributions

"Come and shop" model for dignified experience

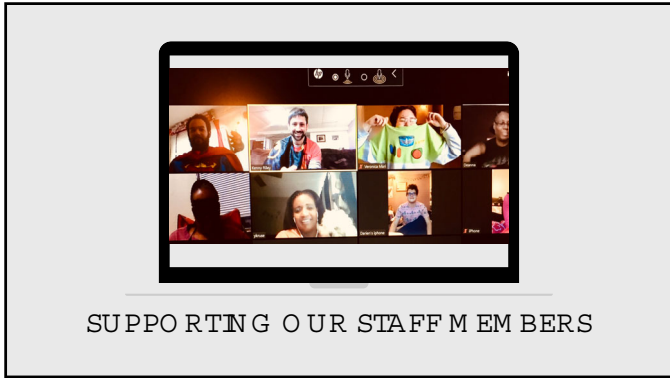
Academic support

eLearning, STEM kits, and other learning supplies for our children and youth

Family support

Regular check-ins with parents and families

15



16

EMPOWERING STAFF VOICES



Weekly staff town halls	Open Zoom meetings where all staff could share and contribute
Weekly mindfulness sessions	Providing space for fellowship and mental health support during an extraordinary time

17

EMPOWERING STAFF VOICES



Reckoning with racial injustice	Facilitating sessions to allow staff members space and grace to process trauma and promote healing
	Embedding social justice and equity in our work, in recognition of our namesake

18

OUR CHILDREN AND FAMILIES COME FIRST



"If not us, who?"

Keeping everyone safe

Recognizing that our families needed our services more than ever

Establishing new protocols for cleaning, masking, class size, and COVID closures



19



REOPENING OUR DOORS

20

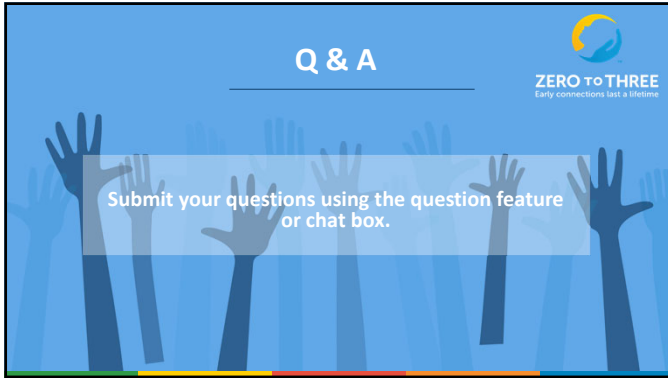
THANK YOU



CAROLE ROBERTSON CENTER
for Learning



21



Q & A

ZERO TO THREE
Early connections last a lifetime

Submit your questions using the question feature or chat box.

22



Join us for our next Virtual Event!

ZERO TO THREE
Early connections last a lifetime

Two-Part Series on Infant Mental Health with Emerging Leaders in the Field

Featuring Markita Mays
EMBRACE Perinatal Care for Expecting Black Families: Perinatal Mental Health Seeding Self Determination & Liberation (in the spirit of Sankofa)
August 12th at 1 PM

Featuring Kerrie Schnake
Be Well Care Well: An Innovative Approach to Supporting Child Care Provider's Well-Being
August 19th at 1 PM ET

zerotothree.org/resources/1479-virtual-event-calendar

23
